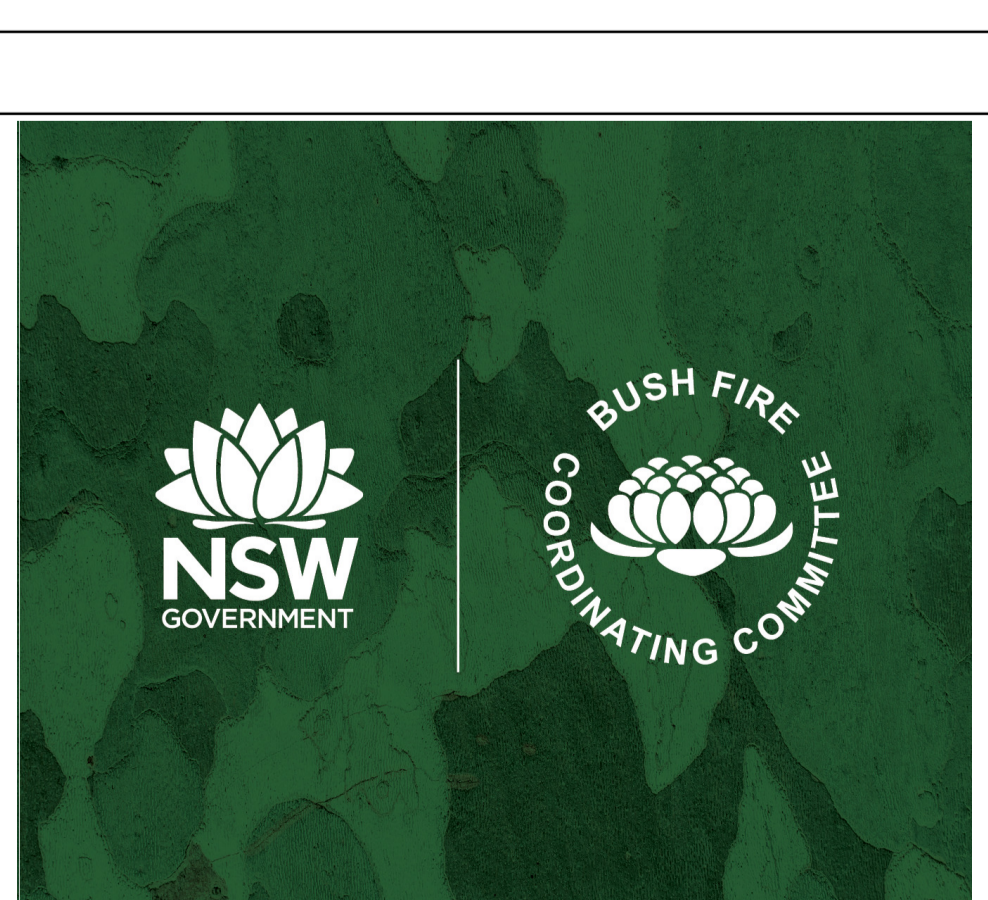


© Department of Customer Service 2023



Mosman/North Sydney/Willoughby
Environmental Risk Current

LEGEND

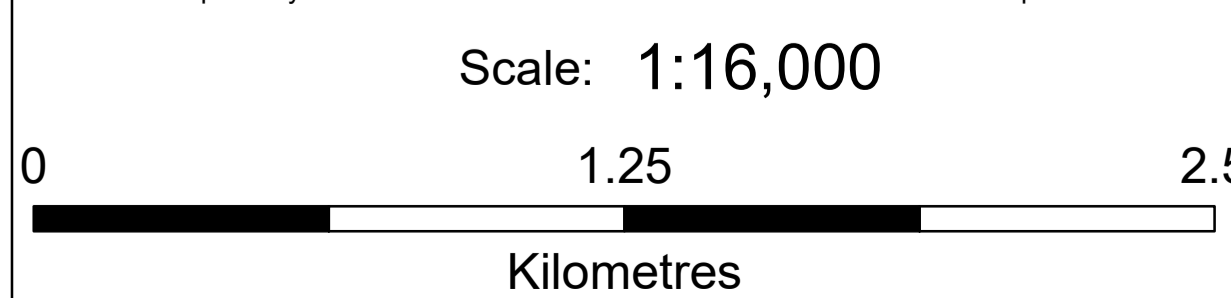
- Bush Fire Management Committee (BFMC)
- Environmental Risk Current**
- Lowest Risk
- Low Risk
- Moderate Risk
- High Risk
- Highest Risk

Map Description

Environmental Risk Current
This bush fire risk map shows the current level of modelled bush fire risk to predicted Environmental assets across the BFMC. Environmental assets used in the model are based on data from BioNet, best available Threatened Ecological Community mapping, protected land regulation mapping and other key data sets. Environmental assets have been subject to a quantitative risk modelling process that considers the environmental significance, vulnerability, fire history, fire management guidelines of Environmental assets and the likelihood that Environmental assets will be exposed to a bush fire event that could cause a destructive impact. Each coloured square on the map represents the relative level of risk to Environmental assets across the BFMC. Environmental assets in the lowest risk category can still be damaged by a bush fire. Environmental assets in lower risk levels are less likely to be exposed to a fire that will cause it damage relative Environmental assets that are in a higher-level risk category.

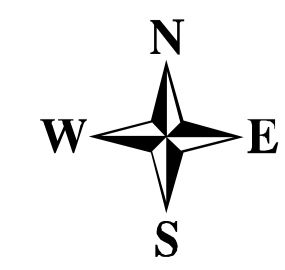
WARNING INFORMATION

1. This map has been prepared by a NSW Government Agency ("the Agency") using data supplied to it by other agencies and entities.
2. The Agency has not verified or checked the data used to prepare this map. The map may contain errors and omissions. The Agency has not made any attempt to ground truth the map.
3. There will be a margin of error in relation to the location of features recorded on the map. The Agency is unable to specify the extent or magnitude of that margin of error.
4. Significant changes may have occurred:
 - i. in the time between which the data was originally collected and the map produced; and
 - ii. since the map was produced.
5. Users must, wherever possible, ground truth the map before relying on it or the accuracy of the map or the information recorded on the map for any purpose.
6. The Agency accepts no responsibility for any injury loss or damage arising from the use of this map or any errors or omissions in the information recorded on the map.

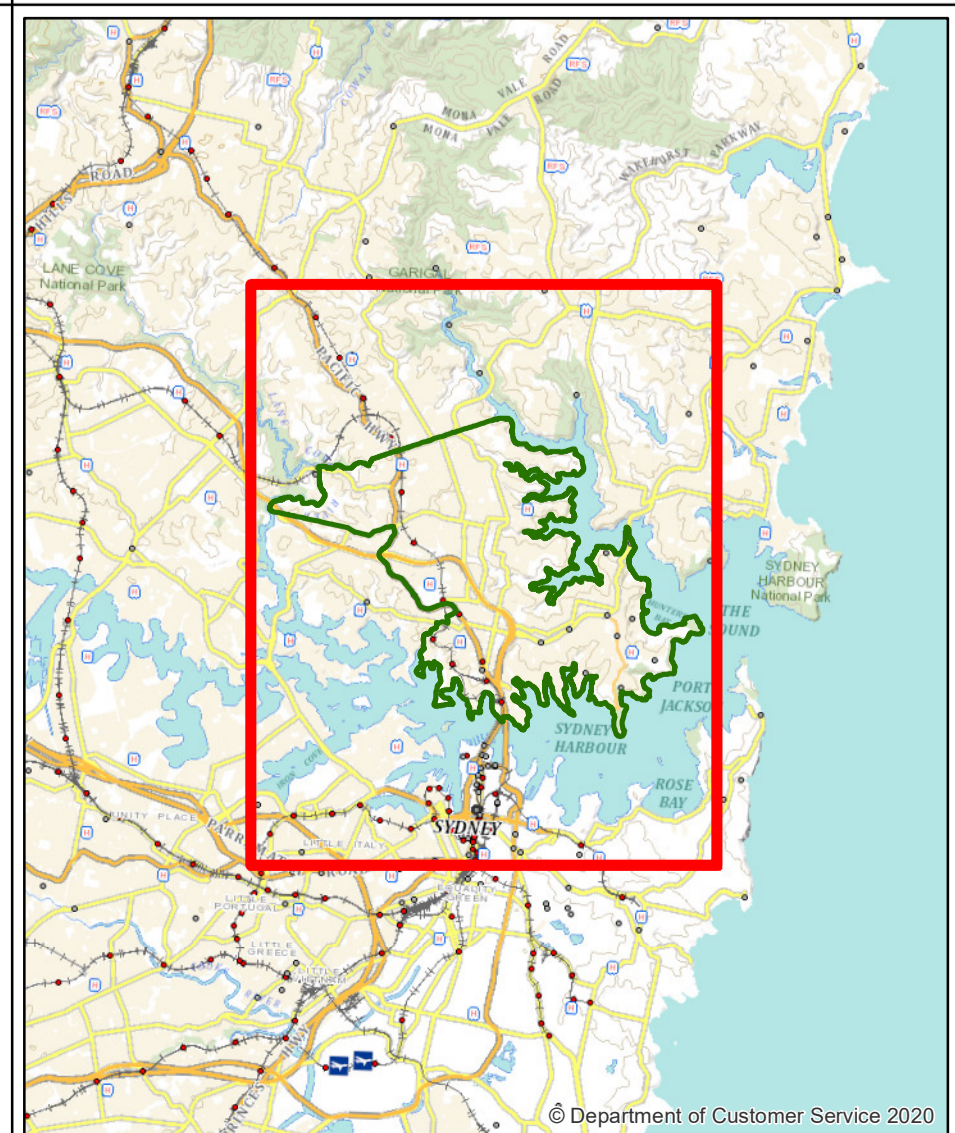


PRODUCTION INFORMATION

Base Data: © LPI, SPOT, SKM, OEH, Sensis, Katron
Map Projection: GDA 1984 NSW Lambert
Projection: Lambert Conformal Conic
Print Date 23/08/2023 4:44:17 PM
Produced by: NSW Rural Fire Service for the BFMC



KEY MAP



© Department of Customer Service 2023