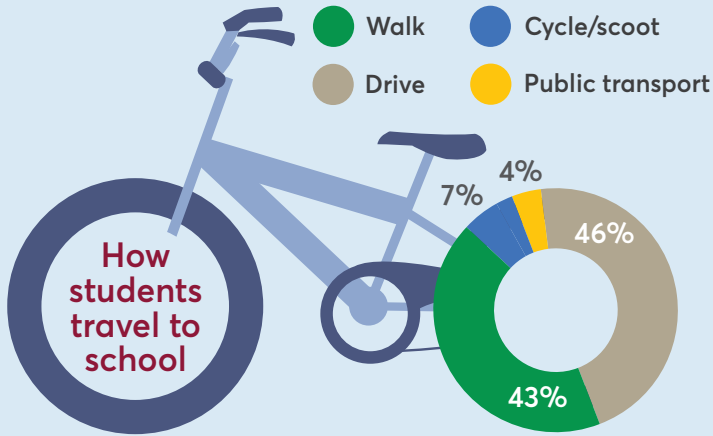
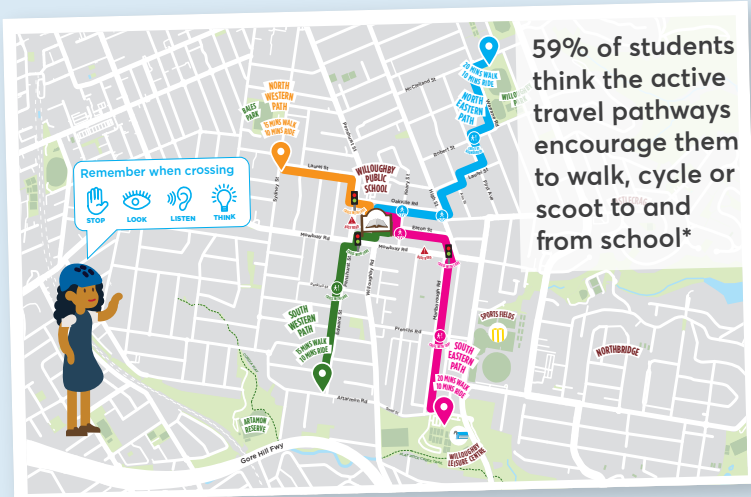
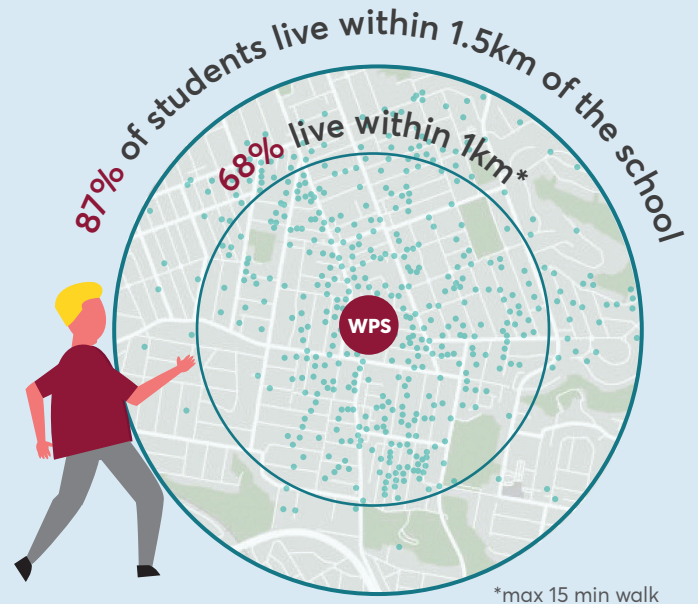




Willoughby Public School ACTIVE TRAVEL DATA



Source: Average of WPS student counts between August '23 to May '24



*NSW Dept. Education 'Tell them from me survey - Oct 2023'

Ride 2 School Day – 24 MARCH 2024

- 76% of students walked, cycled, scootered or caught public transport
- Over 190 students rode a bike or scootered to school
- 52% of students who normally get driven to school, changed to active travel on that day



A phenomenal achievement, with an increase of 24% in active travel rates compared with 2023 and demonstrates what is possible by the school community

92% of parents support the encouragement of active travel to get to and from school

Source: Parent Survey August 2023

A 15% increase in active travel would take up to 80 cars off the road around the school at peak hour times



Updated July 2024

